

Roto-Plate Assembly Instructions

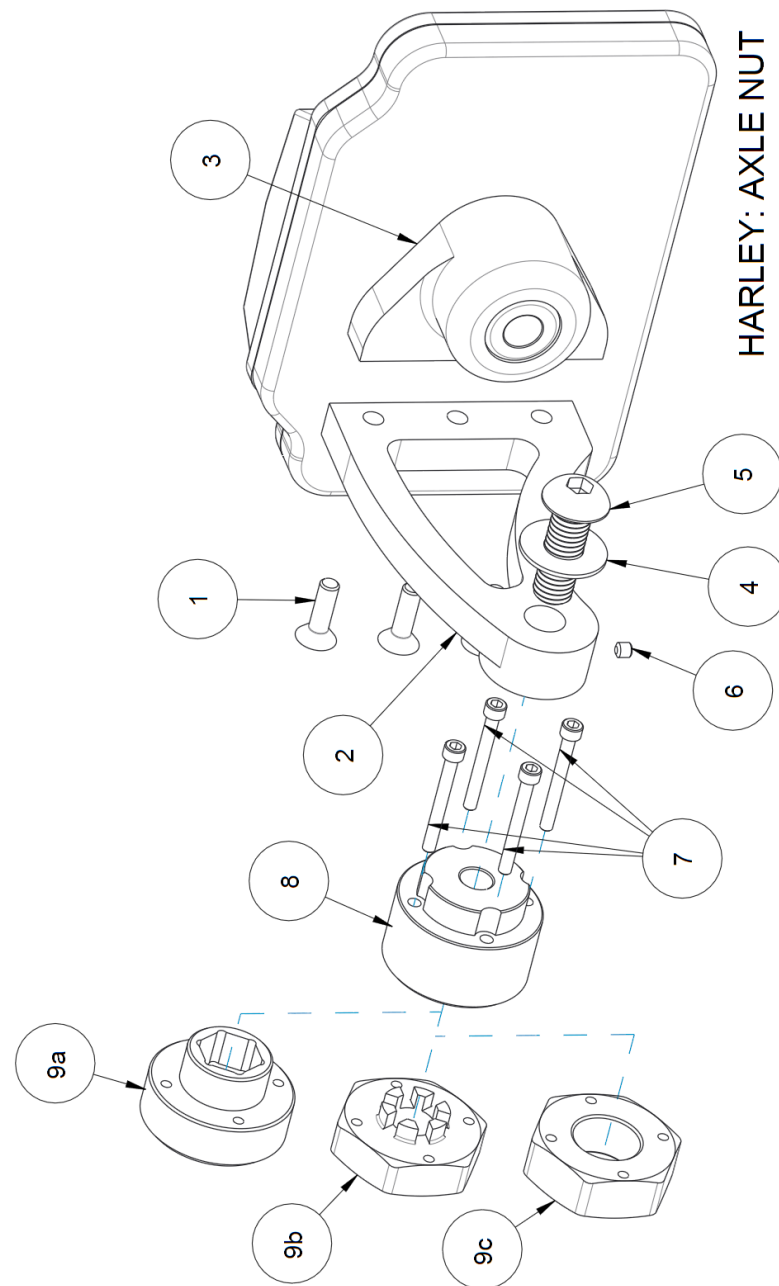
Harley-Davidson Axle Nut Kit

TOOLS REQUIRED:

TORQUE WRENCH
STOCK AXLE NUT SOCKET/ALLEN WRENCH
5/32", 5/16", 9/64" ALLEN WRENCH
THREAD LOCTITE

INSTALLATION:

- Using screws (1), assemble side arm (2) to Roto-Plate (3). **NOTE: USE OF LOCTITE IS NOT REQUIRED. SCREW IS PROVIDED WITH LOCKING NYLON PATCH ALREADY ON THREAD.** Torque all three screws (1) to 70 IN-LBS.
- If already assembled, disassemble axle kit by removing screw (5), washer (4), from end of axle adapter (8), separate axle adapter (8) from replacement axle nut (9) by removing four screws (7). Adapter (8) will now separate from replacement axle nut (9). At the motorcycle, remove factory axle nut and safely clip or pin (depending on model) from motorcycle rear axle.
- Replace stock axle nut with replacement axle nut (9) from kit. Torque replacement nut (9) to original factory specifications (*see motorcycle service manual*)
- Replace original factory safety clip or pin onto axle to retain replacement nut (9)
- Fasten axle adapter (8) with four screws (7). Torque to 26-28 IN-LBS. Use of Loctite is recommended. **NOTE: OVER TIGHTENING OF SCREWS (7) COULD CAUSE FASTENER FAILURE AND RESULT IN DAMAGE TO ROTO-PLATE.**
- Fasten Roto-Plate to axle kit by placing with flat washer (4) onto screw (5).
- Insert screw (5), washer (4) assembly through side arm bracket hole of Roto-Plate
- Thread screw (5) into axle adapter (8), do not tighten completely yet. **Use of Loctite is recommended.**
- Before completely tightening Roto-Plate into place, confirm desire angle of display (tilt) and proper clearance when rotating from horizontal to vertical orientations.
- Secure Roto-Plate completely once desired position is achieved. Torque to 56-58 FT-LBS.
- To prevent further movement, insert tighten anti-rotation set screw (6) into side arm (2) and torque to 26-28 IN-LBS. **NOTE: USE OF LOCTITE IS NOT REQUIRED. SCREW IS PROVIDED WITH LOCKING NYLON PATCH ALREADY ON THREAD.**
- Route all wiring through hollow pivot shaft of Roto-Plate. Wire lights as follows:
- FOR ROTO-PLATE MODEL:** Black=Ground, Red =Running lights, Blue=Brake light
- FOR ROTO-PLATE JR MODEL (w/OPTIONAL LED FRAME):** Black=Ground, White=Running lights
- Use of a wire wrap or conduit is recommended and should be inserted completely inside center pivot shaft of Roto-Plate. **NOTE: CARE SHOULD BE TAKEN TO PREVENT WIRE WRAP AND WIRING FROM BEING TOO TIGHT AROUND SNAP RING ON INSIDE OF ROTO-PLATE. SNAP RING FAILURE COULD RESULT IN ASSEMBLY FAILURE AND DAMAGE TO ROTO-PLATE.**
- Solder and heat shrink is recommend for all connections to Roto-Plate wires and motorcycle harness



Top Down Products
www.TopDownProducts.com



REV AF

Top Down Products www.TopDownProducts.com