

# Heelboard Assembly Instructions

## TOOLS REQUIRED:

REV AA

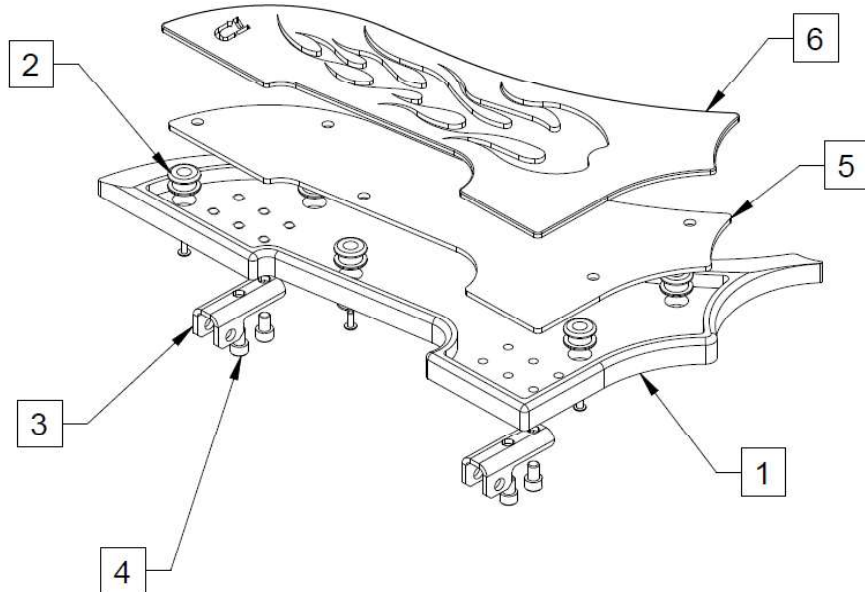
5/64", 5/32" ALLEN WRENCH

THREAD LOCTITE **NOTE: USE OF LOCTITE IS RECOMMENDED ON ALL FASTENERS.**

## INSTALLATION:

STEP 1. Using rubber grommets (2) by assembling into large holes in Heelboard base (1). **NOTE: USE OF EITHER 70% IPA (ISOPROPAL ALCOHOL) OR A GLASS CLEANER TO AID IN INSERTION OF RUBBER GROMMET.** Be sure each grommet is fully inserted and each flange on both side are fully seated and flush to the surfaces of the Heelboard base.

STEP 2. Assemble bracket (3) to Heelboard (1) using screws (4). **OPTION: THERE ARE THREE SETS OF MOUNTING HOLES, THE FRONT SET OF TWO HOLES POSITION THE HEEL-REST CLOSEST TO THE RIDER, WHILE THE MIDDLE SET AND REAR SET WILL MOVE THE HEELBOARD FURTHER AWAY FROM THE RIDER FOR MORE ROOM/LEG STRETCH.**



STEP 3. Assemble Lower Graphics Deck (5) with Top Deck (6) by aligning Upper Deck (6) stand-off through holes in Lower Deck (5).

STEP 4. Assemble Upper/Lower Deck just assembled onto top of Heelboard base (1) pocket so stand-offs from Upper Deck (6) align with holes in Rubber Grommets (2).

STEP 5. Using screws (8) and washers (7), securely fasten Upper/Lower Deck assembly to Heelboard base (1).

STEP 6. Using stock floorboard sholder/pivot bolt and flanged nut, secure Heelboard assembly to stock mounting bracket.

